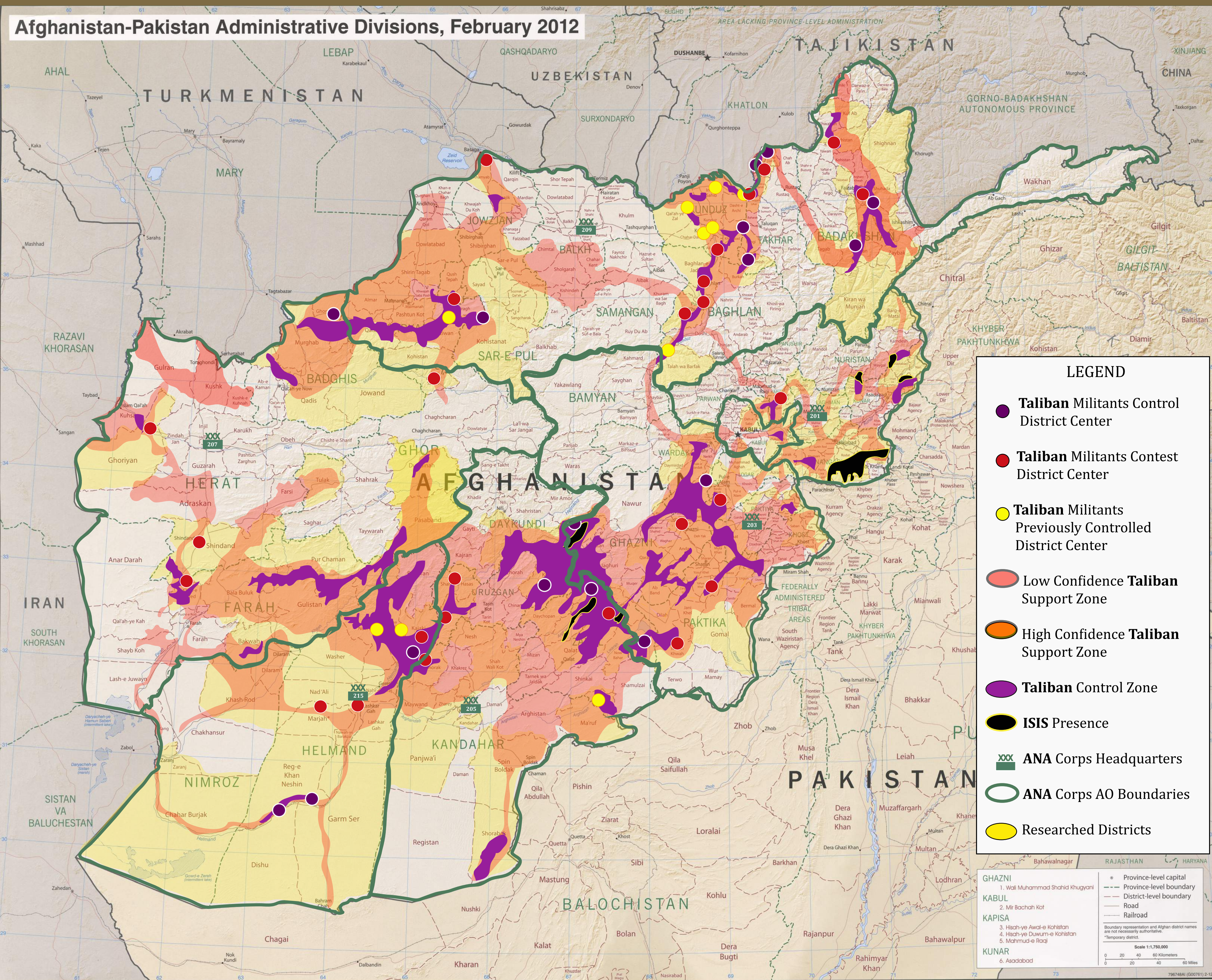


## Afghanistan-Pakistan Administrative Divisions, February 2012



This map partially depicts areas of Taliban control and support and ISIS presence across Afghanistan as of December 10, 2015 as well as the status of district centers that have been attacked by Taliban militants in 2015. Some support zones depicted on the map exceed the bounds of the districts explicitly researched as part of this project. These low-confidence support zone assessments are based upon historical, terrain, and demographic analysis. High-confidence support zones are depicted in districts that were fully researched as part of this project. ISW analysts have assessed conditions in 200 of 409 districts. Taliban militants captured the district center of Reg-e Khan Neshin district, Helmand province on December 9 after prolonged clashes with police and ANSF, the last district center capture portrayed on this map. Taliban militants loyal to Mullah Akhtar Mansour attacked the joint U.S.-Afghan Kandahar Airfield near Kandahar City on December 8. This attack is not represented on the map because it does not constitute an attempt by Taliban militants to control a district center. ISW will update this map as ground conditions change and as analysts continue to assess support zones.